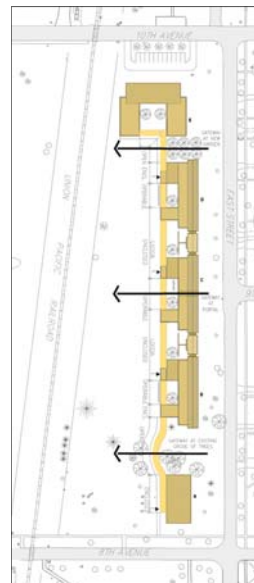
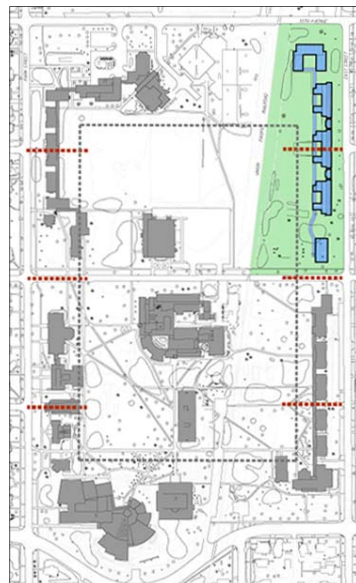


NEW EAST CAMPUS RESIDENCE HALLS
Grinnell College



William Rawn Associates, Architects, Inc., Boston, MA

NEW EAST CAMPUS RESIDENCE HALLS Grinnell College



Site and building diagrams and plans.

Four new residence halls (106,000 s.f.) complete the historic Grinnell College campus using a contemporary interpretation of the college's traditional loggias and linear arrangement of modestly scaled "bar-like" buildings. The central-most residence hall extends connections to the surrounding town of Grinnell and encourages openness of the campus with its large two-story portal, visually linking the "9th Street Axis" with the existing campus North Tower.

- The Loggia of the East Campus symbolically connects to the loggias of North and South Campus and to the broader traditions of building at Grinnell.
- The three-story Portal is directly aligned with the Gates-Rawson Tower and with the broader axis of 9th street, creating strong connections within the campus and to the broader Grinnell community.
- The strong linear building forms symbolically connect to the patterns of linear buildings of North and South Campus and the broader traditions of residence halls at Grinnell.
- New buildings celebrate community through dramatic social spaces highlighted as special features — becoming visible beacons to the campus.
- Natural light and ventilation are emphasized as key elements in sustainable design strategies and core values of Residential Life at Grinnell.
- Courtyards, adjacent to each main social space, become an extension of campus open space and provide dedicated outdoor spaces for each hall.



Two-story portal to the campus.

Campus and Interior Photos





PROJECT FACTS

PROJECT NAME

Grinnell College. New East Campus Residence

PROJECT LOCATION

Grinnell, Iowa

CONSTRUCTION

16 months (04.02 - 07.03)

DATE OF COMPLETION

08.2003

SIZE

258 beds

CLIENT & CONTACT

Grinnell College, Russell Osgood, President

DESIGN PHASES

SD 4 months (06.01 - 10.01)

DD 4 months (10.01 - 01.02)

CD 5 months (01.02 - 05.02)

DESIGN ARCHITECT

William Rawn Associates, Architects, Inc.

STRUCTURAL ENGINEER

LeMessurier Consultants

MECHANICAL & ELECTRICAL ENGINEER

Vanderweil Engineers

William Rawn Associates, Architects, Inc. 10 Post Office Square, Suite 1010, Boston, MA 02109
t) 617.423.3470 f) 617.451.9205 www.rawnarch.com